

## Component specification

BME1205S-02A

Index **A**

**Buzzer**

MBW0E

### 1. General

operating temperature:	-40°C to +85°C	component weight [g]:	2
storage temperature:	-40°C to +90°C		
contact:	SMD	housing color:	black
packageing:	tray	IP rating:	n.a.
ESD conform	<input checked="" type="checkbox"/>	RoHs conform:	yes
remark:	no steps		



### 2. Electrical and acoustical specification

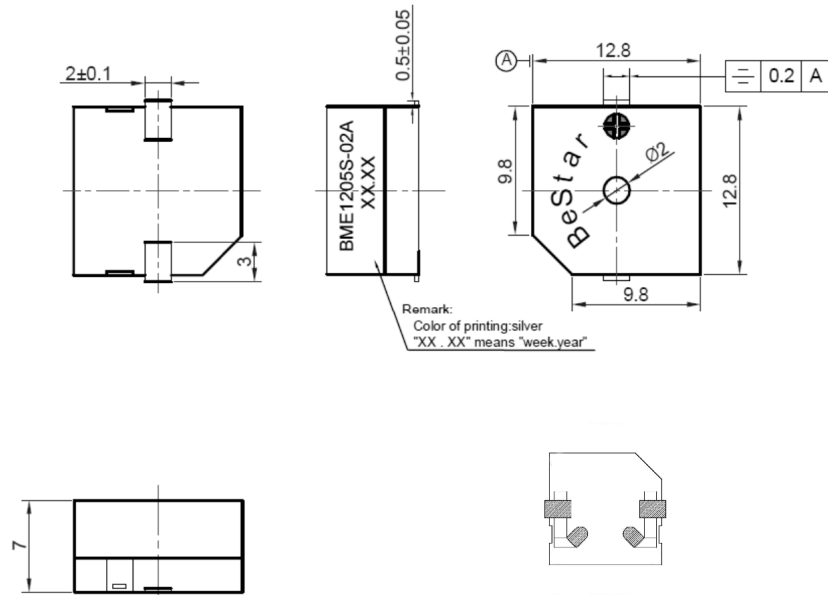
DC resistance [ $\Omega$ ]		45 $\pm$ 5
Impedance [ $\Omega$ ]	2400Hz, sine wave, 60 $\mu$ A	80
Resonance frequency [Hz]		2400
Rated voltage [V]	$V_{op}$	5
Operating voltage [V]		4 - 7
SPL [dBA]:	at 5Vop square wave, 2400Hz, 10cm distance, 50% duty cycle	90 - 98
Current consumption [mA]	at 5Vop square wave, 2400Hz, 50% duty cycle	40

Remark:

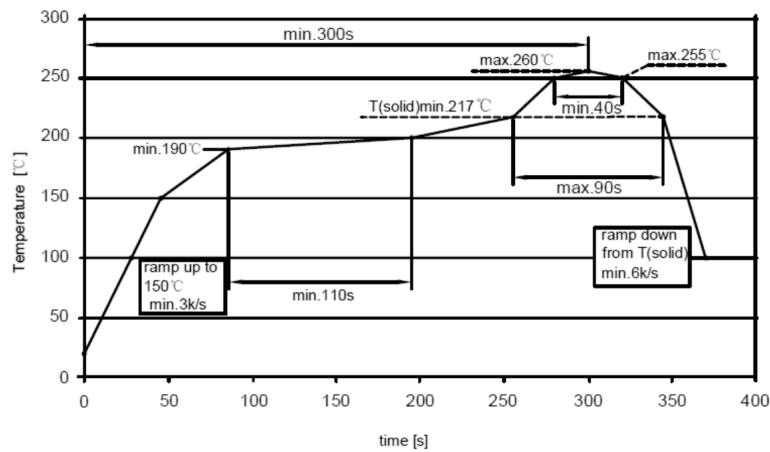
Frequency curve

<b>GREWUS</b>		dimensions without tolerance:	$\pm$ 0.3	scale:	
Designed by:	Ralf Hinnerichs	02.07.2009	part number: <b>BME1205S-02A</b>	index:	Date:
Released by:	Ralf Hinnerichs	02.07.2009		<b>A</b>	02.07.2009
drawing number: <b>399963814</b>			<b>Buzzer</b>	Page 1 of 3	

3. Component drawing

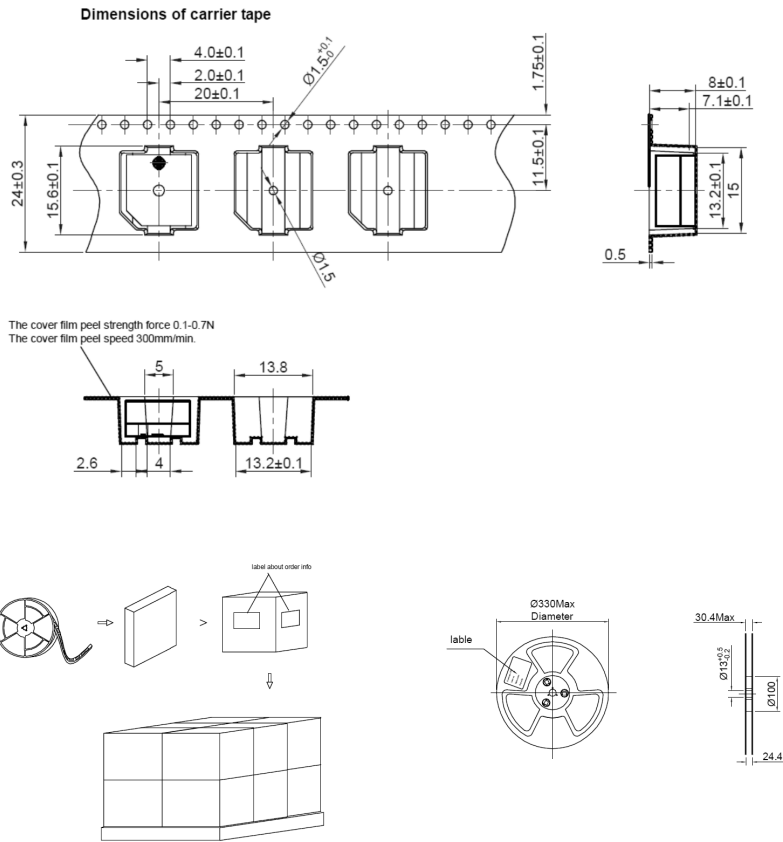


Temperature profile for a lead-free reflow process



<b>GREWUS</b>		dimensions without tolerance: ± 0.3	scale:	
Designed by: Ralf Hinnerichs	02.07.2009	part number: <b>BME1205S-02A</b>	index:	Date:
Released by: Ralf Hinnerichs	02.07.2009		<b>A</b>	02.07.2009
drawing number: <b>399963814</b>		<b>Buzzer</b>		Page 2 of 3

4. Packageing drawing



Carton

Size: 38 x 28 x 37

Smalest unit: reel

Quantity: 2000 pcs / box

quantity smalest unit: 400 pcs / reel

Weight:

further packageing information: 5 reels / carton, 12 cartons / tray size 58 x 77 x 74

<b>GREWUS</b>		dimensions without tolerance: ± 0.3	scale:	
Designed by: Ralf Hinnerichs	02.07.2009	part number:	index:	Date:
Released by: Ralf Hinnerichs	02.07.2009	<b>BME1205S-02A</b>	<b>A</b>	02.07.2009
drawing number: <b>399963814</b>		<b>Buzzer</b>		Page 3 of 3