

not finally

1. General

Operating temperature: -40°C to +90°C      Component weight [g]: 6,5  
 Storage temperature: -40°C to +90°C  
 Contact: Spring      Housing color:  
 Packageing: tray      IP rating:  
 ESD conform       RoHs conform: yes  
 Remark: Frame PC

2. Electrical and acoustical specification

Impedance [Ω]      at 1kHz      50 ± 15%  
 Resonant frequency [Hz]      350 ± 15%  
 Frequency range [Hz]      fo - 17kHz  
  
 SPL [dB]:      0,1W / 1m / 1kHz      72 ± 3  
 Rated input power [W]      0,3  
 Maximum input power [W]      0,5  
 Buzz and rattle      *must be normal with sine wave 3.87V*  
 THD      <3% at 1kHz, 0.1W  
 Membrane material      PEI  
 Polarity:  
 Remark: Frame PC

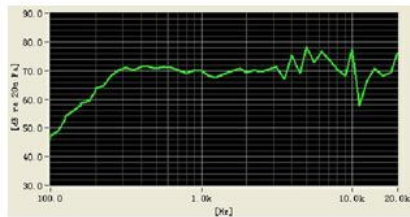
<b>GREWUS</b>		dimensions without tolerance:	scale:	
Designed by: Ralf Hinnerichs	06.08.2010	part number: <b>SO3450F-01A</b>	index:	Date:
Released by: Ralf Hinnerichs			<b>A</b>	06.08.2010
drawing number: <b>403964659</b>		<b>loudspeaker</b>	<b>Loudspeaker</b>	Page 1 of 4

not finally

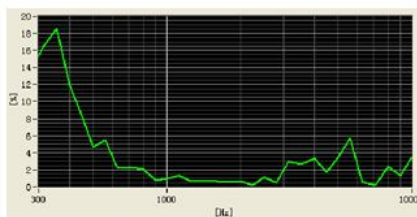
Frequency curve

Conditions:

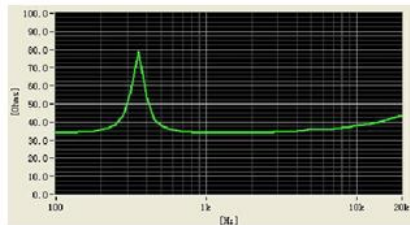
Frequency curve



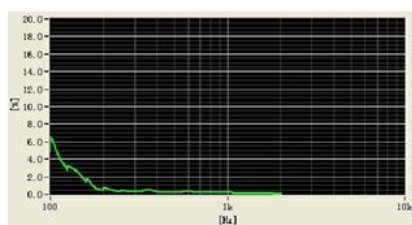
THD



Impedance curve

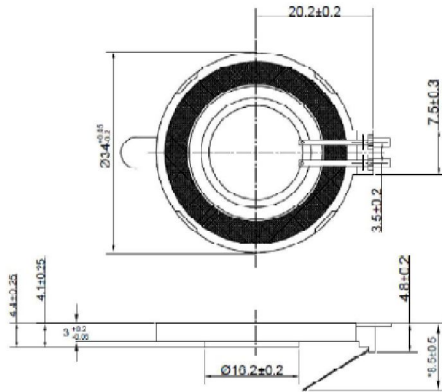


Buzz & Rattle



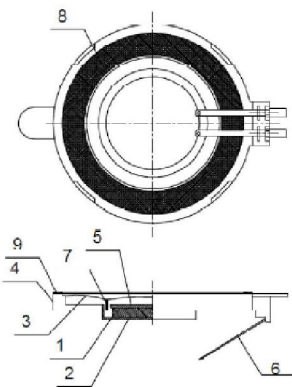
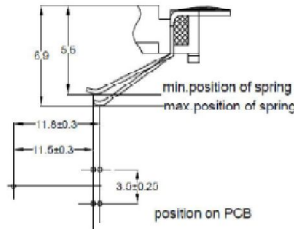
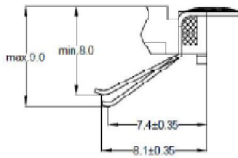
<b>GREWUS</b>		dimensions without tolerance:	scale:	
Designed by: Ralf Hinnerichs	06.08.2010	part number: <b>SO3450F-01A</b>	index:	Date:
Released by: Ralf Hinnerichs			<b>A</b>	06.08.2010
drawing number: <b>403964659</b>		<b>loudspeaker</b>	<b>Loudspeaker</b>	Page 2 of 4

3. Component drawing



**spring connection working**  
 when mounting transducer, the spring contact should be bent from the initial state (on delivery) to either of the two working positions in one step. the contact force of 0.8~2N.

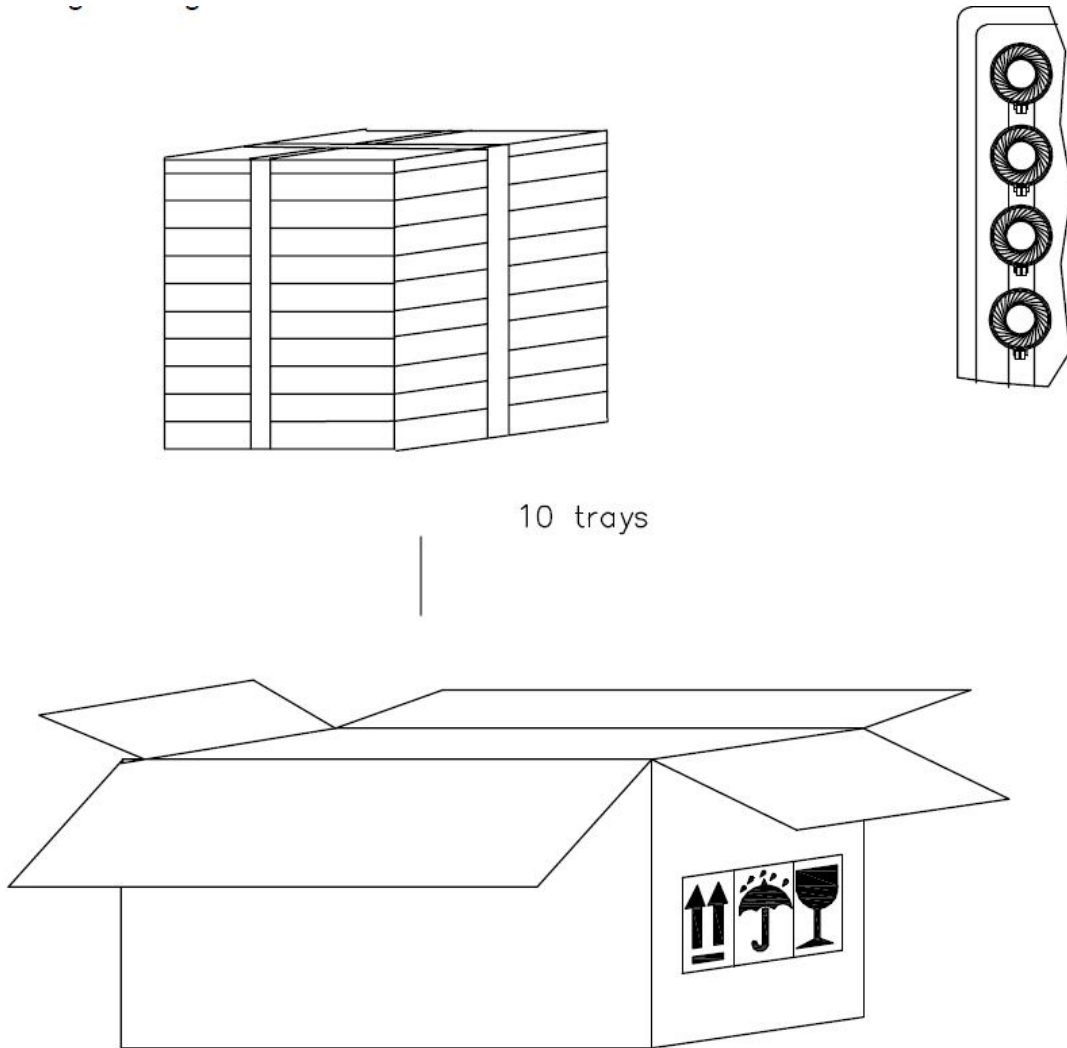
Start position of spring connection



9	Gasket	3M9495LE+PAPER
8	Damp cloth	Silk
7	Voice Coil	Copper
6	Spring	Plate and Gold
5	metal plate	SPCC
4	Frame	PC
3	Diaphragm	PEI
2	magnet bowl	SPCC
1	Magnet	NdFeB
No	Parts Name	Material

<b>GREWUS</b>		dimensions without tolerance:	scale:	
Designed by:	Ralf Hinnerichs	06.08.2010	part number:	index:
Released by:	Ralf Hinnerichs		<b>SO3450F-01A</b>	Date:
drawing number: <b>403964659</b>		<b>loudspeaker</b>	<b>Loudspeaker</b>	Page 3 of 4
			<b>A</b>	06.08.2010

4. Packageing drawing



**Carton**

Size: 63 x 40 x 28.5cm

Smalest unit:

Quantity: 1360

quantity smalest unit:

Weight:

further packageing information: 68 Pcs / tray; 20 trays / carton

<b>GREWUS</b>		dimensions without tolerance:	scale:	
Designed by: Ralf Hinnerichs	06.08.2010	part number: <b>SO3450F-01A</b>	index:	Date:
Released by: Ralf Hinnerichs			<b>A</b>	06.08.2010
drawing number: <b>403964659</b>		<b>Loudspeaker</b>		Page 4 of 4