

Component specification

US1240PA

Index **A**

Ultrasonic Sensor

1. General

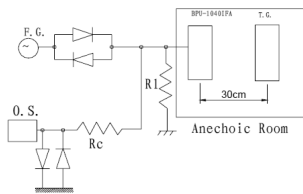
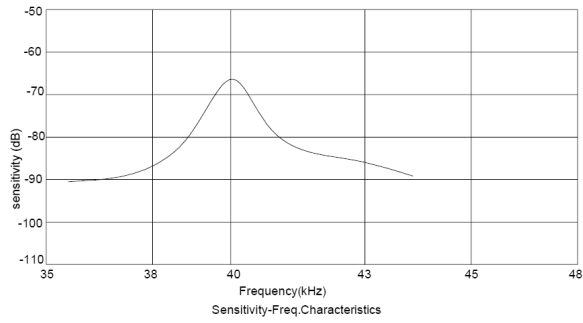
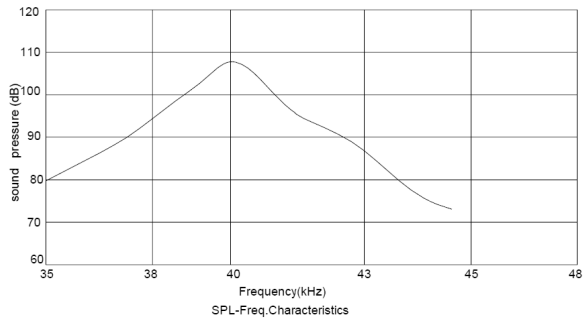
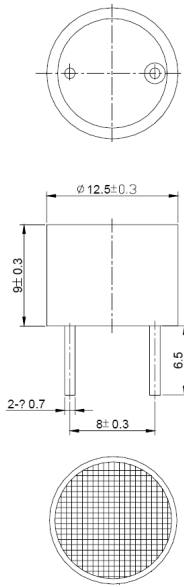
Operating temperature: -30°C to +85°C Component weight [g]:
Storage temperature: -30°C to +85°C
Contact: PIN Housing color: aluminium
Packageing: tray IP rating:
ESD conform RoHs conform: yes
Remark:

2. Electrical and acoustical specification

Using method Dual mode
Detectable range [m] 12
Center frequency [kHz] 40
Capacity [nF] at 1kHz 2 +/- 20%
Directivity [deg] 80
Sensitivity [V/ μ bar] -75
SPL [dBA]: *30cm/10Vrms Sine Wave* 110
Tone constant-pulse:
Polarity:
Remark:
frequency curve:

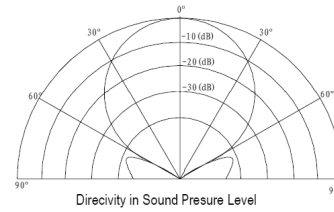
GREWUS		dimensions without tolerance: +/- 0.5	scale:	
Designed by: Ralf Hinnerichs	06.09.2009	part number: US1240PA	index:	Date:
Released by: Ralf Hinnerichs	06.09.2009		A	06.09.2009
drawing number: 400627573		Ultrasonic Sensor		Page 1 of 3

3. Component drawing



R1: 3.9kΩ Rc=1kΩ

T.G.: Target
 F.G.: Function Generator
 O.S.: Oscilloscope



GREWUS		dimensions without tolerance: +/- 0.5	scale:	
Designed by: Ralf Hinnerichs	06.09.2009	part number: US1240PA	index: A	Date: 06.09.2009
Released by: Ralf Hinnerichs	06.09.2009			
drawing number: 400627573		Ultrasonic Sensor		Page 2 of 3